

# Your Update

## Autumn Half Term



### Welcome Back!

Welcome back to the new term. We've been in school for almost two weeks now and we are delighted to welcome all our students back. I'd like to extend a very warm BUH welcome to our new year 7s and their families.

A great deal has happened over the last eighteen months but we are now in a position to resume normal routines and re-establish school expectations. A summary of key points is included in this pack, but please ensure you read the new school rules in full and ensure your child understands them.

School starts at 8:20 every day. Students must be on site by 8:15 and wait outside in the playground. All students, unless agreed with their Personal Development Leader, will enter school via the back gates on Thorn Lane off Haworth Road. These gates are locked at 8:20. Arrival after this time will result in students having to sign in via reception and they will receive a late mark. Two or more late marks in a week will result in a detention after school on Friday.



Uniform helps our students feel part of our community and must be worn at all times to a high standard. Please also ensure your child has a coat for cold weather. Even though we have a new covered outdoor area, we expect all students to spend time outside as part of a healthy school day. Students must wear school shoes, not trainers.

We have a revised set of school rules. Please take time to read them with your child. These include our ready routine in every lesson and very clear expectations for behaviour in lessons and around school. These rules are designed to minimise disruption and fully enable every student in our school to learn. They are based in national good practice and share a commonality with other Beckfoot Trust schools. They are not open for negotiation.

**School Rules:** <https://www.beckfootupperheaton.org/seecmsfile/?id=4188>

# Your Update

## Autumn Half Term

- ✓ Please make all appointments out of school time. Occasionally this is not possible, but most GP and dental appointments can be accommodated to ensure students do not miss school.
- ✓ Our school values are “Ready, Respectful, Safe”. We have taken time in school through our pastoral programme to explain our rationale / reasons for our rules and routines to all students and to reiterate that our community is a place of care, respect and tolerance. We now ask you as parents to support us as we re-establish great in-school learning and behaviour after a tumultuous eighteen months.
- ✓ Finally, can I please ask you to support our busy school by making appointments with staff and attending on time. Our staff all have timetables, schedules and many responsibilities. Whilst we are always happy to engage with parents, arriving unannounced at school or coming late means other tasks are delayed. Any questions or issues around behaviour and pastoral care should, in the first instance be directed to Personal Development Leaders. These staff are key to our school and, with tutors, are the people who know your child best. Appointments with senior staff can be made but we would expect our Personal Development Leaders to be best placed to support you quickly and professionally.



### New School Rules

<b>Ready</b>	Uniform; On Time for school and lessons; Remain in lessons at all times; Have your equipment; Follow the Ready Routines without Question; Contribute to School Life. No appointments in school time. PDLs and CFLs will come to you; never form a queue outside their offices.
<b>Respectful</b>	Uniform is right, Engage Fully in Lessons; Comply with staff requests, smile, speak when spoken to, walk don't run; give each other personal space; indoor voices; least intrusive actions always, no gum, language used will always be kind and appropriate. Do not drop litter, follow rules about where to play ball games.
<b>Safe</b>	Follow the rules as they keep you safe; take every opportunity to regulate your behaviour; accept consequences of your actions without question; be kind to others, never harm anyone else, No phones.

### The Ready Routine

#### **The Ready Routine Start of Lessons**

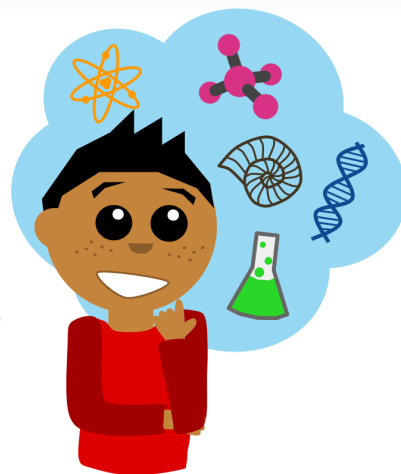
- ✓ Line Up in silence – Be met at the door by the teacher with a smile, smile back.
- ✓ Go to your allocated seat
- ✓ Coat off (if start of day or after break), ensure Uniform is correct
- ✓ Get equipment out of bag
- ✓ Start the DO NOW Activity without fuss.

#### **Ready Routine End of Lesson** (Ready to Transition to next lesson or break time)

- ✓ The bell is your signal to do this and it is the teacher's signal not the students. The quicker you do this the quicker you will be dismissed!
- ✓ Equipment in bag and coat in bag (unless end of day or going outside to break), ensure Uniform is correct
- ✓ Seat pushed in under desk/table
- ✓ Stand behind seat in silence
- ✓ Wait to be dismissed

### Curriculum

In this pack we have included a link to the details of what we are delivering in each subject during the first half term. We have several exciting curriculum developments including changes in our approach to assessment and reporting this academic year. Please read through and get in contact with subject teachers if you have any questions. All subjects are now teaching in their department areas and so can access all the specific resources that they need; some subjects were out of their area last year due to the bubble system of classrooms enforced upon us by government restrictions.



**Curriculum Coverage:** <https://www.beckfootupperheaton.org/seecmsfile/?id=4183>

In terms of setting in Key Stage 3 (years 7, 8 and 9) we are following two approaches. Students will be set by ability in Core subjects of English, Maths and Science. However, in other subjects, students will be in mixed ability tutor groups. In KS4, students are set by ability in Core subjects and then mixed ability in Options subjects as some subjects only have one teaching group.



Each subject assesses students at the end of a key period of learning which can be at different points for all subjects. Faculties are producing assessment calendars which will be shared with families this half term. This will allow you to see clearly when your child has an assessment taking place so that you can encourage them to revise. We will have three Progress Reporting Points (one at the end of each term) when the key progress and attitude to learning data will be reported to families. Also,

there will be end of year exams for all year groups. We sincerely hope that year 11 will sit external final exams this year!



# Your Update

## Autumn Half Term



Year 7 students will sit baseline tests in Maths, Reading, Grammar and Spelling in the week beginning October 4th. Exact dates will be sent to families in due course. The information gained from these tests will allow us to effectively set the students in Core subjects.

We have stopped using GCSE grades for reporting progress in KS3. The use of GCSE grades so early in the course of five year study is not accurate as students have not actually begun GCSE courses at that stage. This has been replaced by a percentage report so that students can clearly understand what they have achieved in terms of what they know and what they can do. Teachers will then feedback to students about what they need to do to improve.



Year 11 will have two sets of mock exams; one in November and the second in February in full invigilated exam conditions. We will send these results out in a separate report to families.

Year 10 and 11 students will be issued with target grades based on the Family Fischer Trust target grades that are available for us to use in individual subjects. These targets are based on what students with similar KS2 data starting points have achieved historically. Year 10 will be given an end of Year 10 target (one grade lower than the end of year 11 target), Year 11 will be given an end of year expected target and a challenge target which will be one grade higher.

### **ClassCharts**

ClassCharts is an online system which teachers use to track achievement and behaviour throughout the school day. We believe in working closely with parents and one of the key benefits of using ClassCharts is that we are able to securely share your child's achievement and behaviour with you and keep you up to date in real-time. You will be able to see if your child has been awarded Conduct codes or Attitude to Learning points and read teachers' comments about their behaviour.

Each student and parent has a unique access code for ClassCharts. Your child has been given their access code in school and parent codes have been sent to you by email. Please use this code to create an account by going here: <https://www.classcharts.com/parent/login>

# Your Update

## Autumn Half Term

### Home Learning

From January we will be launching a home learning initiative centered around the use of Knowledge Organisers.

Students will learn how to use the 9 Techniques of Knowledge Organisers across a 10 week program in every subject area.

We will be posting videos of techniques to support use at home.

This term, staff will be working hard to produce high quality Knowledge Organisers ready for the January launch, and attending training to ensure they are used effectively by all. In the meantime, subject homework will still be set on ClassCharts.

#### Methods of Use



**Look, cover, write, check**  
Used to reproduce small sections of text  
e.g. Vocabulary and quotes



**Transform it**  
Used to condense sections into visual prompts  
e.g. Drawing images to represent the Christian Sacraments



**Quiz It**  
Used to test yourself on selected information  
e.g. Tenses and participials of MFL vocabulary



**Photocopy**  
Used to reproduce larger sections of text  
e.g. explanation of methods



**Reduce it**  
Used to condense the sections into a few key words  
e.g. The key diseases in History of medicine



**Mind Map it**  
Used to show connections between sections of a topic  
e.g. Styles of world music and their influences



**Recreate it**  
Used to reproduce diagrams and charts  
e.g. A map of migration patterns



**Prioritise it**  
Used to condense into top 3 key facts/ideas and order  
e.g. Key Enterprise skills



**Connect it**  
Used to connect across different knowledge organisers  
e.g. Colour theory to Pop art

### Curriculum Coverage

To see a detailed breakdown of what your child will be studying in this half term, please see Curriculum Coverage for Half Term 1 here: [www.beckfootupperheaton.org/insert-link-here](http://www.beckfootupperheaton.org/insert-link-here) or view our helpful video overview here: [www.beckfootupperheaton.org/insert-link-here](http://www.beckfootupperheaton.org/insert-link-here)

# Your Update

## Autumn Half Term

### Extra-Curricular Activities

	Lunch	After school
<b>Tuesday</b>		<p>School Food Champions - Year 8 G28 (Ms Abbot)</p> <p>String Orchestra - Music Room (Miss Dickson) <i>only for pupils who have string lessons with Mrs Lawler</i></p> <p>Girls' Netball – MUGA (Miss Teale)</p> <p>Year 7 football - Mr Broadbent</p>
<b>Wednesday</b>	Key Stage 3 Lunch Instrumental Practice – Music room (Miss Dickson)	<p>Tea and Talk Years 7, 8 &amp; 9– G.27 (Miss Rabab &amp; Miss Whittaker)</p> <p>Girls and Boys Cricket - Sports Hall (Mr Jaffrey)</p> <p>Boxing- Wednesday - PC Tony</p>
<b>Thursday</b>	Key Stage 4 Lunch Band Rehearsal – Music room (Miss Dickson)	<p>Staff vs Student Badminton Sports Hall (Mr Jaffrey)</p> <p>Duke of Edinburgh Year 9 F15</p> <p>Vocal Group – Music room (Miss Dickson) all years</p> <p>Girls' Football MUGA (Miss Teale)</p> <p>Robotics – Years 7 – 10 G27 (Mr Hudson)</p> <p>KS4 Football – Mr Broadbent</p> <p>Science Club – Mr Z Mahmood – S.05</p> <p>Student Parliament Social Action Group - Food room (Miss Ali and the student parliament)</p>
<b>Friday</b>	Social Action Group S10 (Ms Moran)	<p>Samba band – Music room (Miss Dickson) all years</p> <p>Health and Fitness Sports Hall (Mr Khan/Mr Hogan)</p> <p>Debate Club (Miss M Hussain) F17</p>